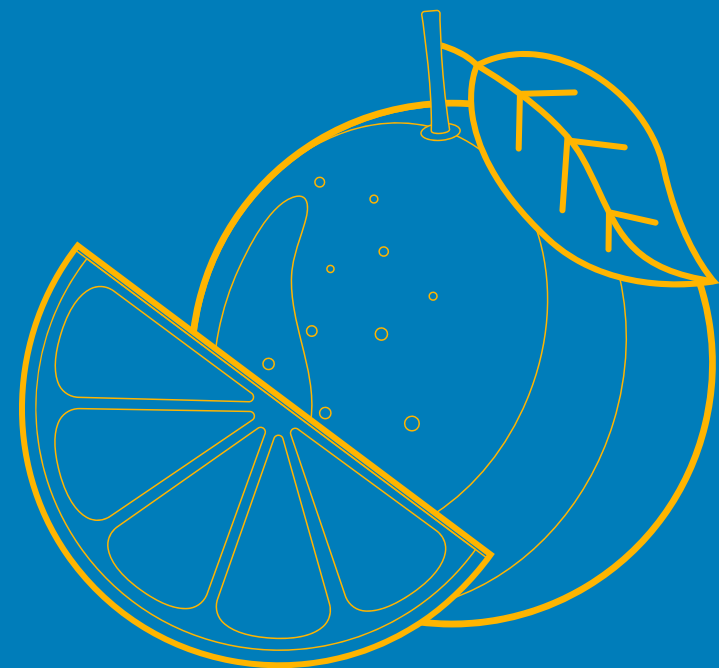


# GROWING EQUITY IN SAN DIEGO COUNTY



*Urban Food Equity*

UC San Diego

ALTMAN CLINICAL & TRANSLATIONAL RESEARCH INSTITUTE

Center for  
Community Health

# AVAILABLE FUNDING

10 awards of  
**\$10,000**

3 awards of  
**\$50,000**



# PROGRAM OBJECTIVES

- Promote community food sovereignty through local urban agriculture.
- Increase equitable access to public funding for local urban agriculture.
- Invest in California Climate Priority Population communities with urban agriculture projects.
- Organize and amplify urban growers as agents of change, land stewards, and community leaders.



# PROGRAM GOALS

1. Build social capital
2. Provide education and skills development
3. Supplement access to fresh food
4. Cultivate agricultural literacy
5. Perform ecosystem services
6. Support economic development
7. Increase food sovereignty
8. Pilot a production innovation



**Must accomplish at least 1 goal for \$10,000 eligibility and at least 2 goals for \$50,000 eligibility.**

[\\*See CDFA subaward guidelines for program goal definitions.](#)

# ELIGIBLE ENTITIES

- **Eligible entities:** Non-profit organizations, for-profit farms and agriculture-related businesses, and Tribal organizations. Fiscal sponsorship is allowed.
- Farms/organizations that received an Urban Agriculture Track 2 Practitioner award from the California Department of Food & Agriculture are **not eligible to apply** because it's the same source funding.



# ELIGIBILITY: URBAN

- Project site is within 25 miles of an “Urbanized Area” containing a population of 50,000 or more people within San Diego County. Cities in San Diego County that are 50,000+ include: San Diego, National City, Escondido, Encinitas, Chula Vista, Oceanside, San Marcos, Santee, Carlsbad, Vista, El Cajon, and La Mesa.
- Indigenous and Tribal organization/farm applicants **are exempt** from the requirement to be in an “urbanized area” and can be located anywhere in San Diego County.



# ELIGIBILITY: CCIPP

- Project site must be located in or directly serve a California Climate Investments Priority Population area.
- All areas **EXCEPT** for the light grey color are eligible.
- Indigenous or Tribal organizations/farms exempt from the “urban” requirement still need to be located in or directly serve a priority population area.

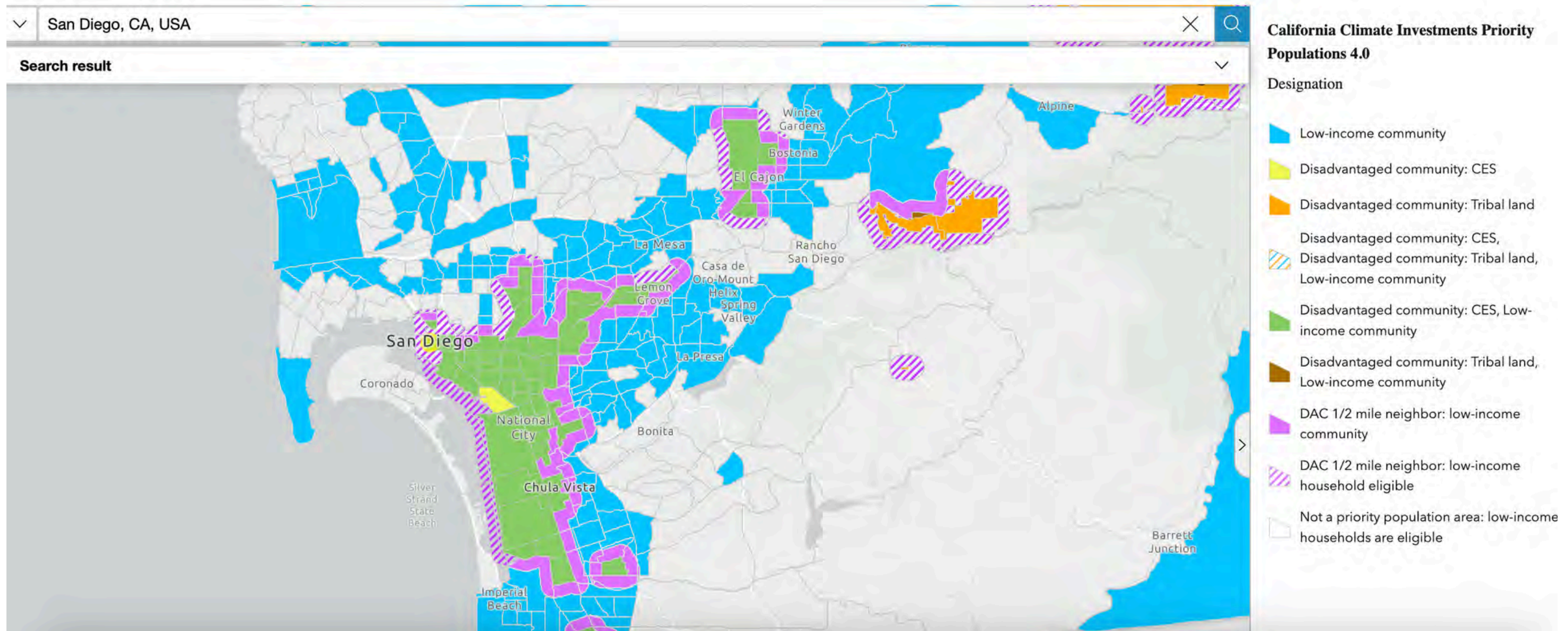


[California Climate Investments Priority Map](#)

# USING THE MAP



## California Climate Investments Priority Populations Mapping Tool 4.0



[California Climate Investments Priority Map](#)



# PRIORITY CONSIDERATION

- **100% of awards** will go to projects located in and/or directly serve California Climate Investments Priority Populations 2024.
- Minimum of 1 award set aside for eligible Indigenous and/or Tribal organization.
- Projects in alignment and support of the San Diego County Food Vision 2030 objectives and goals.
- Projects demonstrating capacity, experience, and impact to contribute to urban agriculture viability in the region. New projects will be considered.



# ALLOWABLE USE OF FUNDS

1. Infrastructure
2. Technical assistance
3. Workforce development
4. Community engagement and education
5. Supplies
6. Equipment \*must inventory equipment \$5,000+



[\\*See CDFA subaward guidelines for more details on allowable costs.](#)

# PROJECTED TIMELINE

Online  
Application Open  
Feb 3 2025

Outreach &  
Application  
Assistance  
Jan-Feb 2025

Application  
Due  
March 10, 2025

Awards  
Announced  
May 2025

Funding  
Disbursed  
Summer 2025

TA, Public  
Engagement,  
Evaluation  
July 2025 -  
Aug 2026

Final Invoice &  
Report Due  
Aug 2026

Urban Grower  
Storytelling  
Sept 2026

# APPLICATION ASSISTANCE OFFICE HOURS



Application Due  
Mon 3/10

- Check the [program website](#) for updates on application assistance open office hours.
- Sign up for [program news here](#).

Need application assistance in Spanish or another language?  
Request to: [emari@ucsd.edu](mailto:emari@ucsd.edu)

Need a 1:1 assistance session?  
Request to: [alins@ucsd.edu](mailto:alins@ucsd.edu)

# THANK YOU!

---

Please connect!

**Elle Mari**  
Project Director  
emari@ucsd.edu

**Rain Lins**  
Project Coordinator  
alins@ucsd.edu

Please check the website for updates.

---

[Growing Equity Website](#)

**UC San Diego**  
ALTMAN CLINICAL & TRANSLATIONAL RESEARCH INSTITUTE

Center for  
Community Health